

# KARIBAN

**REFERENCE :** K402

**SIZES :** 6/8\_8/10\_10/12\_12/14

**COMPOSITION :**

Fabric 1 : Softshell 300 95%polyester / 5%elastane

**WEIGHT :**

Fabric 1 : 300 gsm

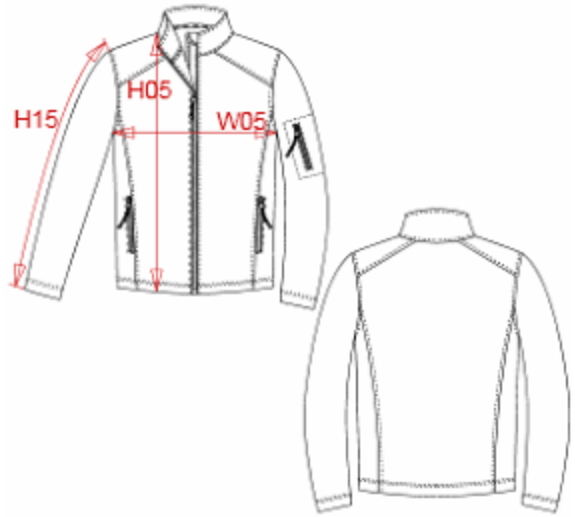
**FABRIC CONSTRUCTION AND FINISHING :**

3 layers bonded (outer: 95%polyester 5% elastane / performance membrane / inner: microfleece polar) BR:

3000gsm/24h / WP: 8000mm

**ARTICLE WEIGHT :**

523 gr/pc



| DESCRIPTION  |   |                    |       |       |       |       |  |  |  | COLORS    |  | PANTONE SERIGRAPHIE |  |  |
|--|---|--------------------|-------|-------|-------|-------|--|--|--|-----------|--|---------------------|--|--|
| <b>Français :</b> Veste enfant softshell                               |   |                    |       |       |       |       |  |  |  | Black     |  | Black               |  |  |
| <b>English :</b> Kids soft shell jacket                                |   |                    |       |       |       |       |  |  |  | Red       |  | 200C                |  |  |
| <b>Nederlands :</b> Kids soft shell                                    |   |                    |       |       |       |       |  |  |  | Navy      |  | 296C                |  |  |
| <b>Deutsch :</b> Kinder soft shell jacke                               |   |                    |       |       |       |       |  |  |  | Aqua blue |  | 7690C               |  |  |
| <b>Español :</b> Chaqueta softshell para niño                          |   |                    |       |       |       |       |  |  |  |           |  |                     |  |  |
| <b>Italiano :</b> Giacca bambino softshell                             |   |                    |       |       |       |       |  |  |  |           |  |                     |  |  |
| <b>Português :</b> Blusão softshell de criança                         |   |                    |       |       |       |       |  |  |  |           |  |                     |  |  |
| MEASUREMENT  |   |                    |       |       |       |       |  |  |  |           |  |                     |  |  |
| Description  | Tol +/-   | Tol +/- Taille max | 6/8   | 8/10  | 10/12 | 12/14 |  |  |  |           |  |                     |  |  |
| <b>W05</b> 1/2 largeur poitrine avec zip / 1/2 chest width with zipper | 3,5%  | 3,5%               | 40,05 | 43    | 46    | 49    |  |  |  |           |  |                     |  |  |
| <b>H05</b> Hauteur totale devant / Front total height                  |   |                    | 50,70 | 55,50 | 60,35 | 65,15 |  |  |  |           |  |                     |  |  |
| <b>H15</b> Longueur dessus de manche / Sleeve length                   |   |                    | 45    | 49,05 | 53,10 | 57,15 |  |  |  |           |  |                     |  |  |
| CARE LABEL   |   |                    |       |       |       |       |  |  |  |           |  |                     |  |  |
|  |   |                    |       |       |       |       |  |  |  |           |  |                     |  |  |
| PACKING  |   |                    |       |       |       |       |  |  |  |           |  |                     |  |  |
| Box  | 10 pcs / box<br>6/8 => L:48cm W:34cm H:18cm GW:8.5kg NW:7.00kg<br>8/10=> L:48cm W:34cm H:18cm GW:8.5kg NW:7.00kg<br>10/12=>L:48cm W:34cm H:18cm GW:8.5kg NW:7.00kg<br>12/14=>L:48cm W:34cm H:18cm GW:8.50kg NW:7.00kg |                    |       |       |       |       |  |  |  |           |  |                     |  |  |