

KARIBAN

REFERENCE : K701

SIZES : 6/8_8/10_10/12_12/14

COMPOSITION :

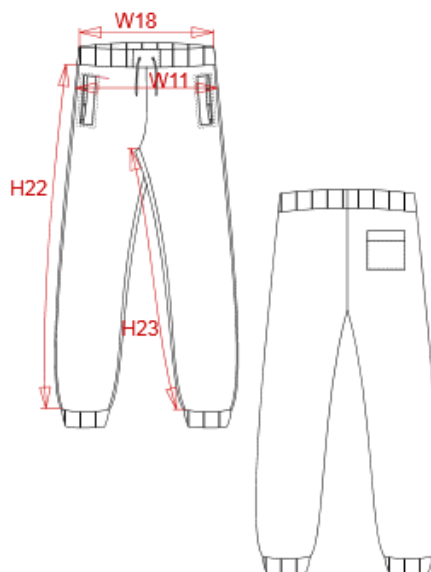
Main fabric : Brushed Combed Cotton / Polyester fleece 80/20 - 300 80%cotton / 20%polyester

WEIGHT :

Main fabric : 300 gsm

ARTICLE WEIGHT :

335 gr/pc



DESCRIPTION						COLORS		PANTONE SERIGRAPHIE	
Français : Pantalon jogging enfant English : Kid's jog pants Nederlands : Deutsch : KINDER-JOGGINGHOSE Español : PANTALÓN DE FELPA PARA NIÑO Italiano : PANTALONI JOGGING BAMBINO Português : Calças de treino de criança						White		White	
						Black		Black	
						Navy		296C	
						Oxford grey		-	
						Light royal blue		7685C	
MEASUREMENT									
Description	6/8	8/10	10/12	12/14					
W18 1/2 taille élastiquée / 1/2 elasticated waistband	28	30	32	34					
W11 1/2 bassin / 1/2 hip width	37	39	41	43					
H22 Longueur côté sans ceinture et BC bas / Side leg length without waistband and rib bottom	69,50	76,50	83,50	90,50					
H23 Longueur entrejambe sans ceinture et BC bas / Inside leg length without waistband and rib bottom	55,50	61,50	67,50	73,50					
CARE LABEL									
PACKING									
Box	20 pcs / box 6/8 => L:58.1cm W:37.8cm H:26.7cm GW:7.00kg NW:5.95kg 8/10 => L:58.1cm W:37.8cm H:26.7cm GW:7.80kg NW:6.75kg 10/12 => L:58.1cm W:37.8cm H:26.7cm GW:8.25kg NW:7.20kg 12/14 => L:58.1cm W:37.8cm H:26.7cm GW:8.90kg NW:7.85kg								