

PROACT.®

REFERENCE : PA439

SIZES : XS_S_M_L_XL_XXL

COMPOSITION :

Main fabric : Polyester birdseye - 140 100%polyester

WEIGHT :

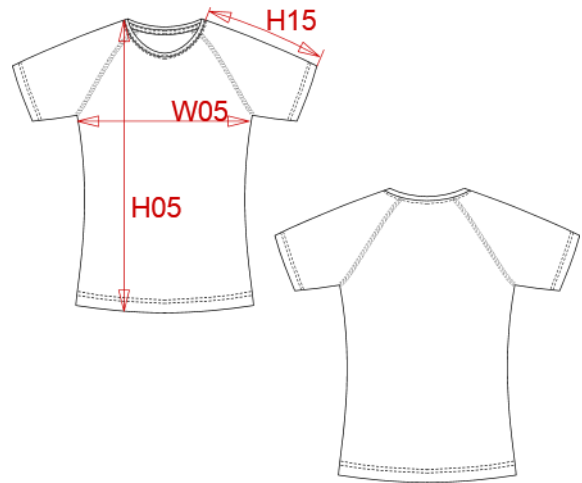
Main fabric : 140 gsm

TECHNICAL DETAIL :

Quick dry fabric

ARTICLE WEIGHT :

100gr/pc



DESCRIPTION
Français : T-shirt femme manches courtes
English : Ladies short sleeve T-shirt
Nederlands : Dames T-shirt met mouwen
Deutsch : Polyester T-shirt für Damen
Español : Camiseta de manga corta para mujer
Italiano : T-shirt donna maniche corte
Português : T-shirt de denhora de manga curta

MEASUREMENT							
Description	XS	S	M	L	XL	XXL	
H05 (L) Hauteur totale / Total height	62	64,25	66,50	68,75	71	73,25	
W05 (L) 1/2 largeur poitrine à 1.5cm de l'emmanchure / 1/2 chest width at 1.5cm below armhole	42	45	48	51	54	57	
H15J (L) Longueur manche courte raglan / Raglan short sleeve length	26	27,75	29,50	31,25	33	34,75	

CARE LABEL					

PACKING	
Box	50 pcs / box XS=> L:60cm W:40cm H:19cm GW:5.60kg NW:4.60kg S=> L:60cm W:40cm H:19cm GW:5.70kg NW:4.70kg M=> L:60cm W:40cm H:19cm GW:6.00kg NW:5.00kg L=> L:60cm W:40cm H:19cm GW:6.50kg NW:5.50kg XL=> L:60cm W:40cm H:19cm GW:7.00kg NW:5.90kg

COLORS	PANTONE SERIGRAPHIE
White	White
Red	186C
Black	Black
Lime	367C
Orange	1585C
Aqua blue	7690C
Sand	4755C
Olive	7770C
Sky blue	283C
Fine grey	877C
True Yellow	116C
Violet	7672C
Dark pink	494C
Fluorescent yellow	-
Fluorescent orange	-
Fluorescent pink	-
Sporty navy	7546C
Sporty royal blue	647C
Fuchsia	7425C
Kelly green	7727C
Wine	504C